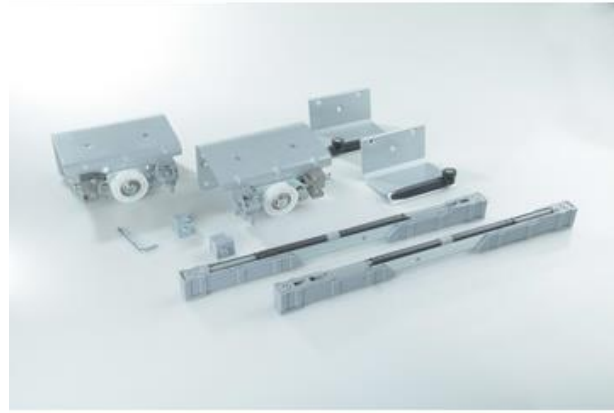
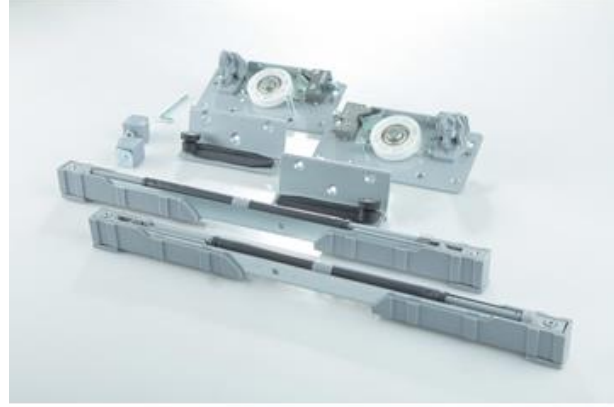
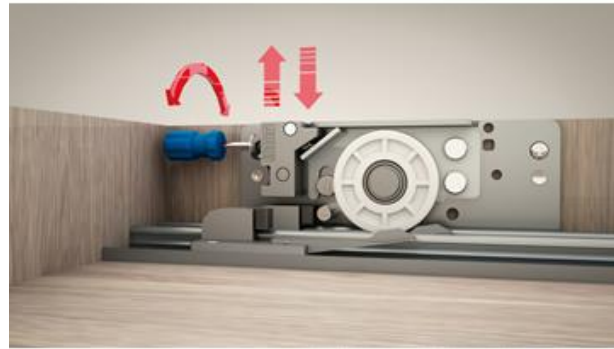


100 KG AYARLI SÜRME GARDROP SİSTEMİ 18 - 28 MM**100 KG ADJUSTABLE SLIDING WARDROBE SYSTEM 18 - 28 MM****100 КГ РЕГУЛИРОВАННАЯ РАЗДВИЖНАЯ СИСТЕМА ШКАФ-КУПЕ 18 - 28 ММ**

- 18 - 28 mm Farklı Kalınlıklardaki Kapaklara Kullanıma Uygunur.
- Üstten Çalışan Mekanizma Modelidir.
- İç Kapak - Dış Kapak Mekanizmalara Sahip Sürme Gardrop Sistemidir.
- Taşıma Kapasitesi 1 kapak için 100 Kg 'dır.
- 2 - 3 - 4 kapaklı uygulamalara uygundur.
- Ray İçi Fren Sistemleriyle Çift Yöne Yavaşlatıcı uygulanabilir.
- Taşıyıcı Üst Mekanizmalarda pom kaplı Krom Rulman Kullanılmaktadır.
- Alt İzleyici Klavuzlarda Poliüretan Kaplı Rulmanlı Makara Sistemi Mevcuttur.
- Üst Mekanizmalar Yandan Ayar sistemine Sahiptir.
- Ürünün Montaj Videosunu www.albaturas.com sitemizden izleyebilirsiniz.



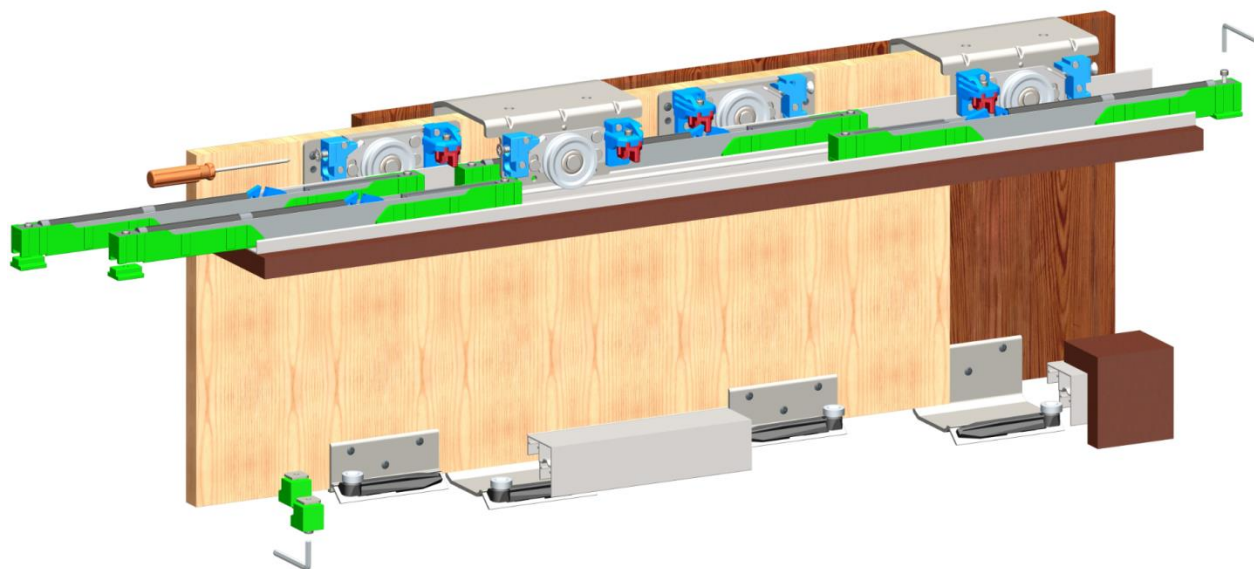
- Assembly with 18 - 28 mm wood panel
- The door weight is discharged on the upper track
- System separately includes internal door and external door for wardrobes
- Maximum carrying capacity is 100 kg per door
- Able to use 2 or 3 or 4 door
- Able to use soft closer in two side
- Carrier mechanism includes rollers that made crom ballbearing and pom enjection
- Bottom slider mechanism includes rollers that made crom ballbearing and tpu enjection
- Able to adjust the carrier by using the special screw until the system is perfectly aligned.
- You can follow installation videos of our products on www.albaturas.com

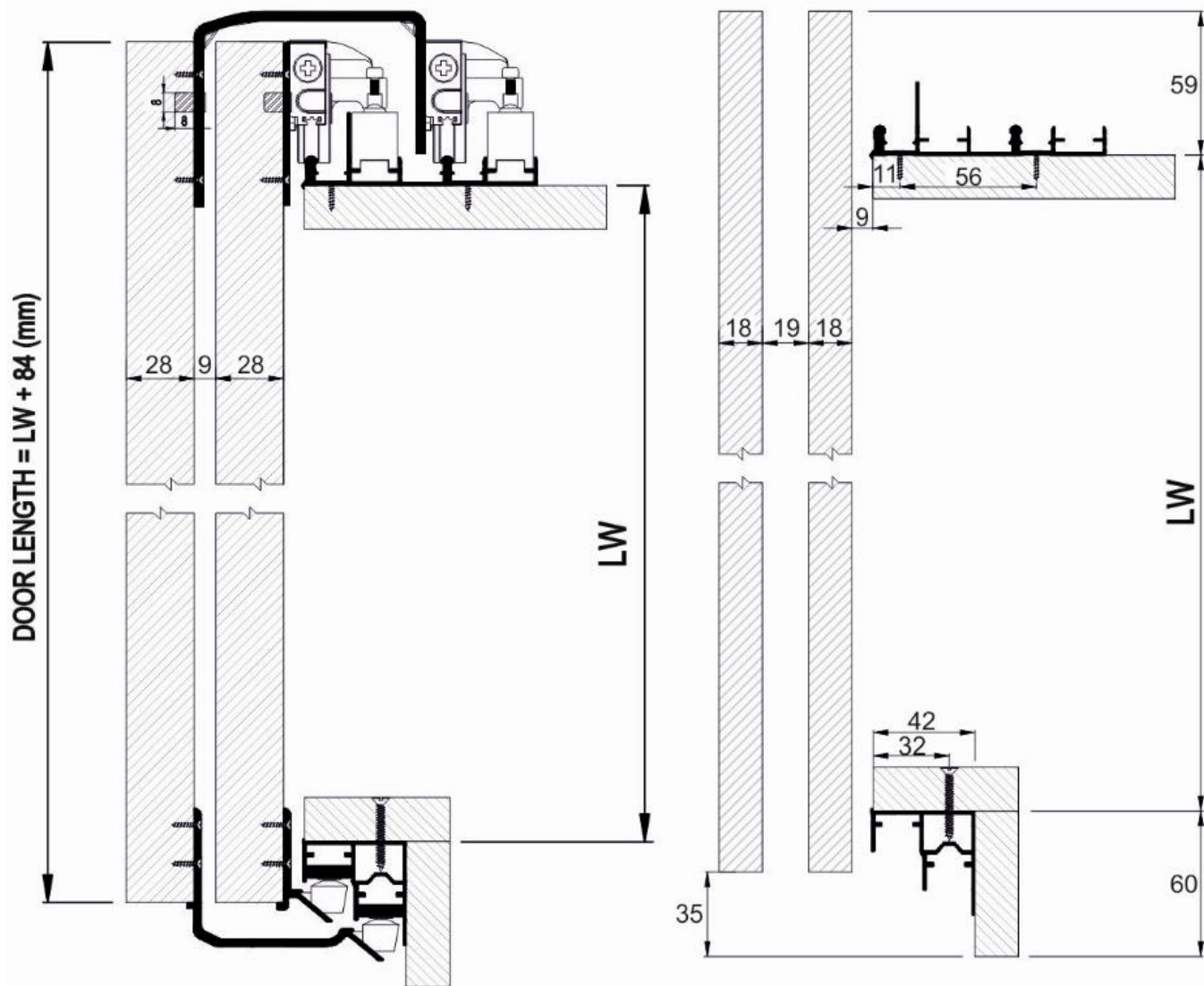


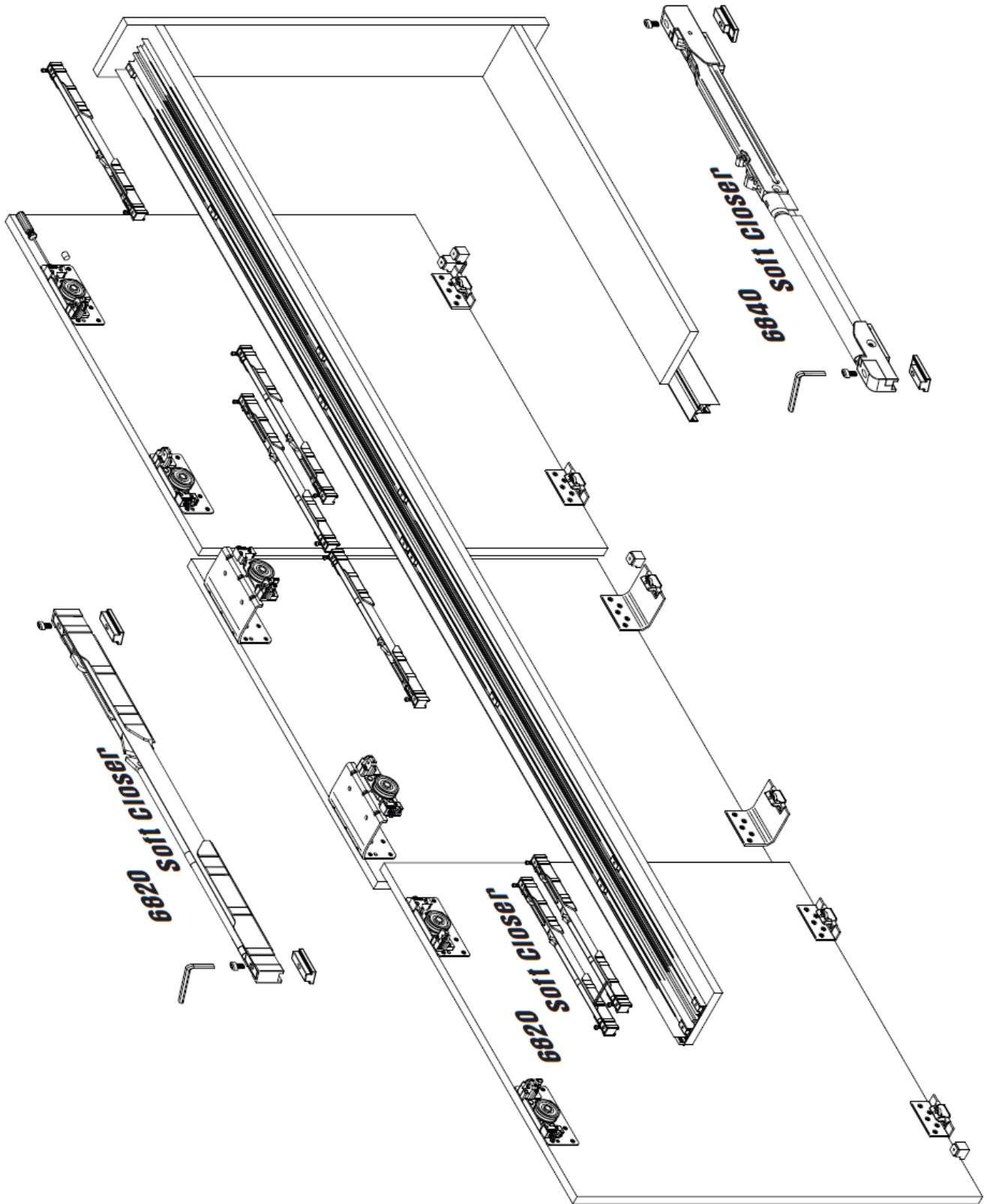
100 KG AYARLI SÜRME GARDROP SİSTEMİ 18 - 28 MM

100 KG ADJUSTABLE SLIDING WARDROBE SYSTEM 18 - 28 MM

100 КГ РЕГУЛИРОВАННАЯ РАЗДВИЖНАЯ СИСТЕМА ШКАФ-КУПЕ 18 - 28 ММ







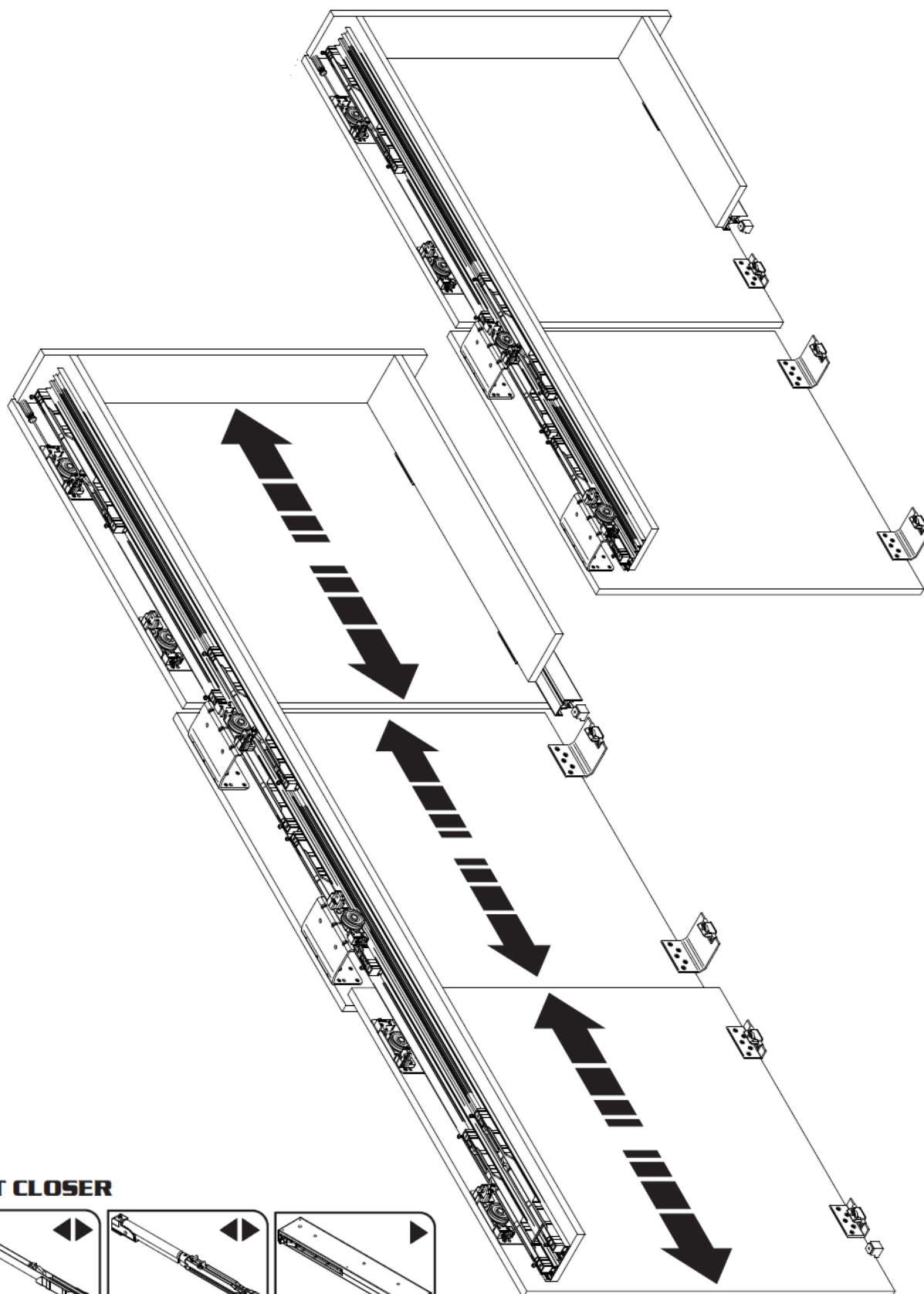
2 KAPAK / 2 DOOR



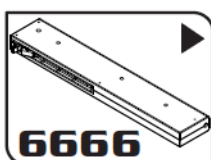
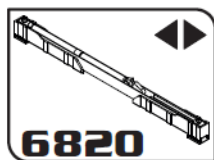
3 KAPAK / 3 DOOR



4 KAPAK / 4 DOOR



SOFT CLOSER





- Kayar kapakların sertçe kapanmasını önleyerek dolabın ve sürgü sistemlerinin ömrünü uzatır.
- Yavaşlatma mekanizması Çocuk , Yaşlı ve engellilerin bulunduğu ortamlarda parmaklarının sıkışma riskini ortadan kaldırır.
- Yavaşlatma Mekanizmasının kullanıldığı kapaklarda , ortamda istenmeyen sesleri önler ve gürültüsüz bir ortam sağlar.

- It prevents to closure of sliding lids firmly , extends the life of cabinet and sliding systems.
- The sliding door system , removes the risk of fingers jamming at the enviroment has children, overaged and handicapped.
- At the doors using of sliding mechanism , it prevents blaers in enviroment and it procures a noiseless enviroment.